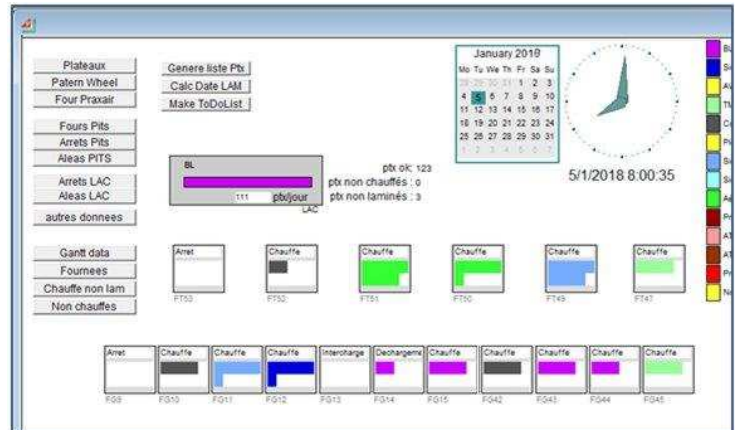


Dynamic Simulation of complex Systems : industry, transports, services

ExtendSim – the most adaptive and accessible general-purpose simulation software on the market

Modeling / simulation software for continuous, discrete or hybrid flows. Modeling by graphical connection of objects representing the components of a system.

- Ergonomics facilitating usage,
- Versatility and power of the tool,
- Flexible interface adapted to the end user,
- Cooperation with other applications,
- Graphical AND programmed approach,
- Libraries of components for each field.

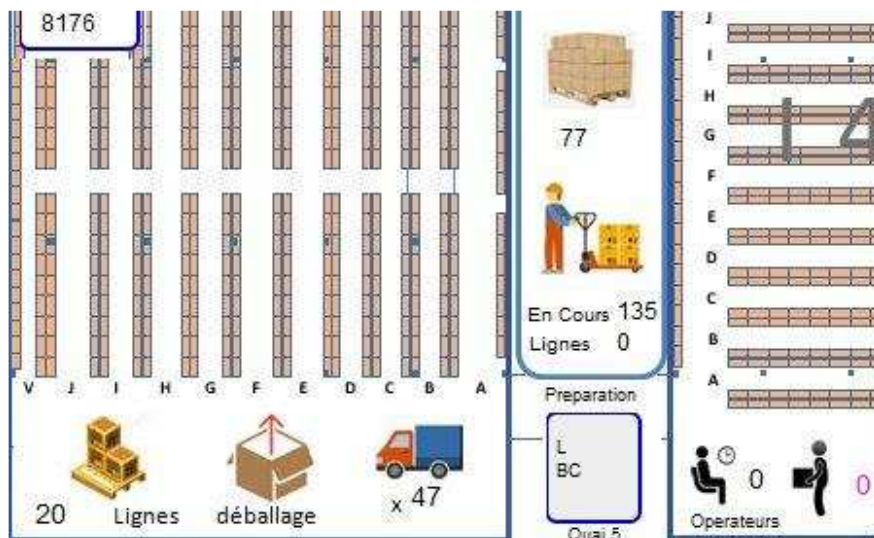


Comprehensive features

- Discrete, continuous and hybrid flows,
- Qualification of flows by attributes and priorities,
- Hierarchical sub-models,
- Database integrated into ExtendSim,
- Optimization with search for convergence,
- Meaningful 2D animation,
- Curve plotters, statistical tools,
- Dynamic data exchange with MS Excel,
- Sensitivity analysis of a model to variable parameters,
- Integrated type C language compiler to develop specific components.

Applications

- **Manufacturing production systems,**
- **High throughput and process industries,**
- **Logistics flows, transport, Supply Chain,**
- **Tertiary sector (banking, insurance, health)**
- **Sizing of resources / equipment.**



Versions and licenses

Individual or floating license,
Developer or runtime version.

Download a Trial version
on www.extendsim.fr

Detailed information on applications of
ExtendSim, 30 days trial of full version.

Technical Support, training and assistance

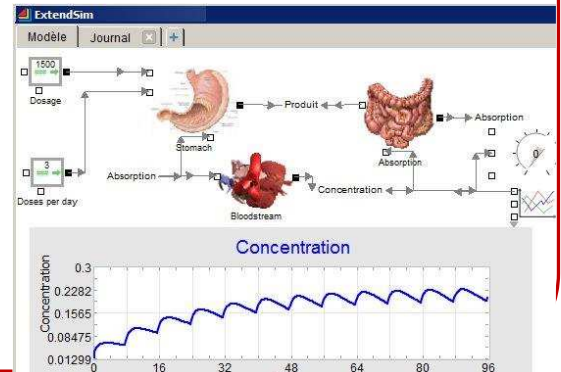
1Point2, with consultants specializing in flow simulation operating in France since 1987, offers reactive technical support, personalized training and services in flow modeling and dynamic simulation for all types of application.

ExtendSim CP – the core simulation engine

The core features of ExtendSim CP are present in all ExtendSim products.

ExtendSim CP is used to represent the behavior of any system where time and values are recalculated at each periodic step (biology, ecology, finance, electronics, physics, etc.), and offers components that meet the needs of generic and continuous problems. For more specific applications, the integrated development environment allows you to adapt or create components as well as your own user interface.

- Graphical database linked to the simulator, for data storage, management and display.
- Dynamic link of data between parameters and tables of the model and internal or external sources.
- Unlimited number of hierarchical levels (sub-models).
- Controls, interactive dialog boxes including during simulation.
- Customizable 2D animation.
- Optimizer block to determine optimal values.
- ActiveX controls and embedded COM objects.

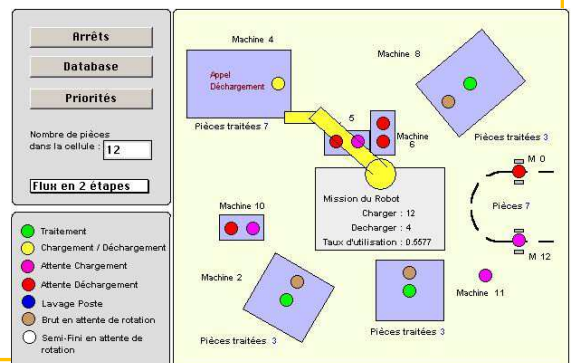


ExtendSim DE – optimizing industrial performance

An essential tool for any organizational and performance study, ExtendSim DE integrates a discrete event engine and is used to analyze physical or logical flows where temporal events cause changes of state in a system.

Indispensable in cycle reduction, change management, Lean Manufacturing, Six Sigma, ExtendSim DE has been designed for the study and optimization of discrete systems (all manufacturing industries, transport, services, etc.), while including ExtendSim CP functions

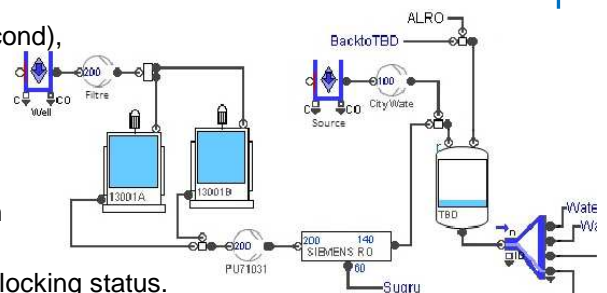
- Several queues and operations algorithms: FIFO, LIFO, preemption, priority, reneging, blocking etc.
- Customizable attributes, configurable orientation rules.
- Association and dissociation of items.
- Statistical analyzes with confidence interval.
- Ramp-up period with statistical reset.
- Schedules applicable to activities and resources.
- Includes the Stat::Fit application, for statistical fitting



ExtendSim Pro – advanced tools for professional models

Rate library: a functionality based on the observation of flow rates, in order to model batch processes, but also large volumes or very fast flows. The library includes tanks, valves, conveyors and more, to model liquid or bulk material flows, while maintaining the item representation and the discrete time management. Particularly suitable for the study of hybrid systems (continuous and discrete mixed flows), and for any industrial sector dealing with very high-rates flow.

- Representation with flow rates (liters per minute, pack per second),
- Calculates the real throughput according to the model flows, its constraints and rules of progression,
- Merging, diverging and orientating flow according to rules,
- Priority flows, qualification by layers,
- Valves controlling and piloting the flows: quantity and duration goals for the throughput of the flow,
- Visualization of levels and directions of flow, and starving or blocking status.



Reliability library: the module combines process simulation with reliability block diagrams (RBD), making it possible to graphically and statistically describe planned maintenance, schedules, failures that may affect resources, and their impact on the availability of the overall system.

ExtendSim Pro is the more complete of all ExtendSim products.